

010-1100 TriGuard Heavy Duty Rotating L-Handle

This robust rotating L-handle features modular construction that allows for customization, including the use of light weight materials without sacrificing strength. The handle also provides for the use of a padlock for additional security.



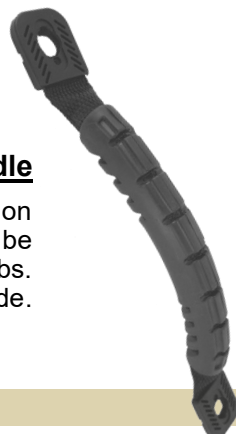
030-1875 Flush Mount Paddle Handle-Free Float

This flush mounted paddle handle with free-floating paddle (when locked) can be used in FMVSS 206 (ECE R11) applications, is power lockable and features four-point pivot plate and lock cam actuation.



040-0600 TriMount Push Button Handle

The 040-0600 TriMount Push Button Handle was specifically designed for off-highway vehicle applications that require a surface mounted exterior push button handle with 120mm or 163mm mounting pattern. Available Padlocking version (PN 19466-14)



020-0200 Comfort-Grip Grab Handle

This strong, lightweight and flexible grab handle is manufactured from tough nylon webbing for strength and durability. The molded comfort-grip handle is pliable and can be used in areas where occupants might impact them. They can withstand a load of 400 lbs. and are easily mounted with two bolts. Overall dimensions are 9.0 in. long X 1.25 in. wide.

Hinges/Accessories

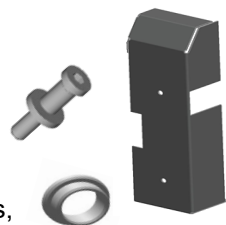


200-0800 Heavy Duty Surface Mount Butt Hinge

This robust surface mounted hinge measures 6 in. (152.4mm) high and 5 in. (127mm) wide, is manufactured out of .50" (12.7mm) steel and is duty-rated at 2,000 lbs. (907 kg) maximum capacity when used as a set. Featuring a removeable hinge pin and a choice of CARC finishes, it is well suited for armored vehicle applications.



Custom versions are also available



TriMark offers a variety of companion components designed to compliment and provide a complete door system including door strikers, rods, power lock actuators, fasteners, bushings, custom covers and weldments.



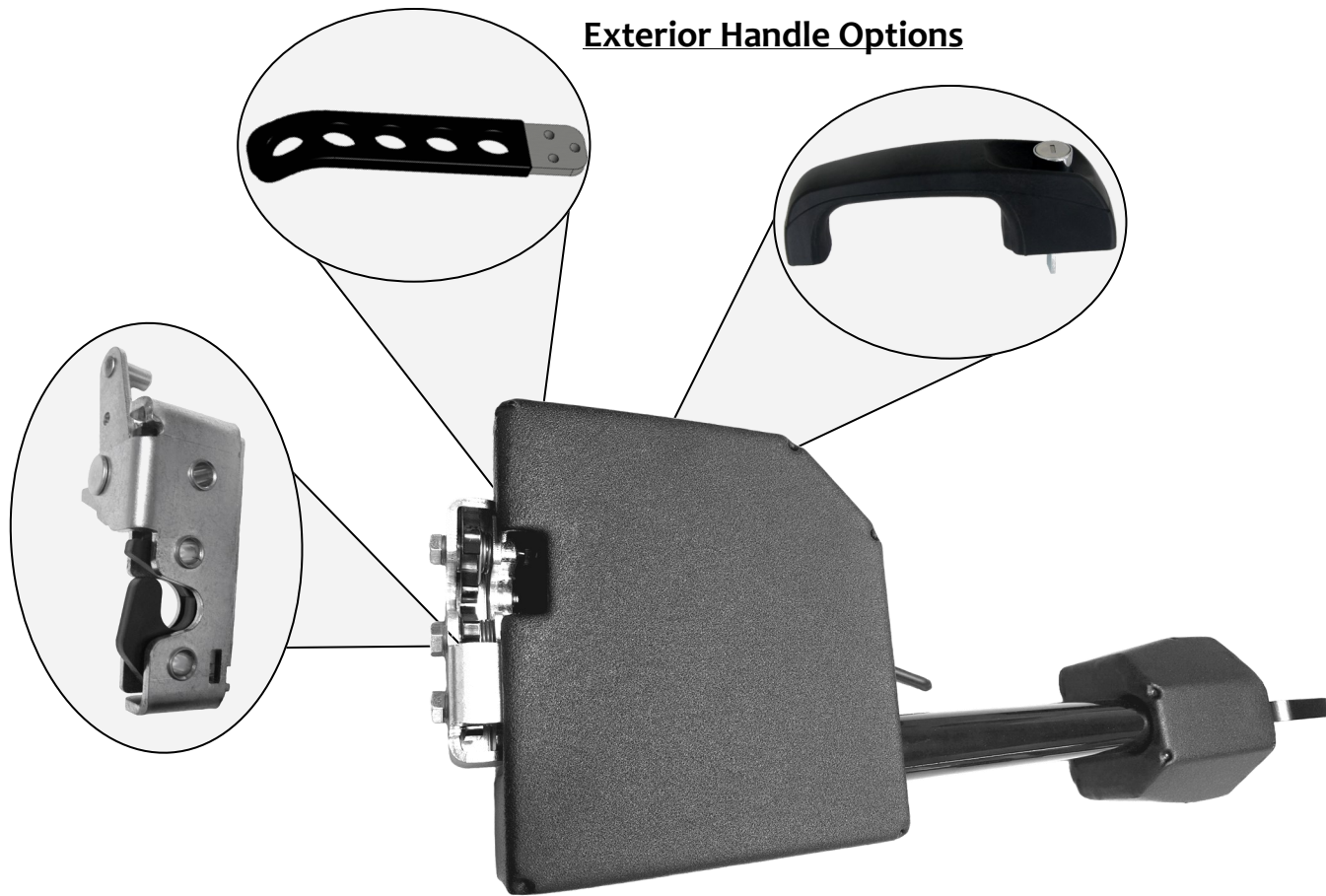
All products can be purchased separately or as a complete one-piece module ready for installation. System kits are available and can include TriGuard line of heavy duty latches, linkages, handles and door modules that are specifically developed for heavy duty armored vehicle applications to provide a comprehensive access solution.

Complete Door Systems

100-4100 TriGuard Heavy Duty Door Module - V2

This updated heavy-duty, pre-engineered door system module provides automotive-like functionality. This low profile, easy to install one-piece module is now available with a rotating lever exterior handle and a second remote latch. Featuring TriMark's 050-1600 Heavy Duty Latch, it is compliant to FMVSS 206 (ECE R11) strength requirements.

Exterior Handle Options



Latches/Locks

020-0900 Two Rotor Remote Inside Squeeze

This product was specifically designed for off-highway vehicle applications including agricultural and construction equipment that require a remote inside release. The robust construction is incorporated into round tubing for support for the opening and closing functions of the door and provides for greater ease of operation (ergonomics) over direct releases.



050-0100 Two Rotor Latch

This versatile two rotor latch is designed for medium to heavy-duty applications for on or off highway entrance doors, compartments and access panels. It features a variety of trip levers and mounting axles for ease of mounting and applications and is FMVSS 206 (ECE R11) compliant.



050-0400 Floating Striker Single Rotor Latch

This robust single rotor latch is designed for medium to heavy-duty applications for on or off highway entrance doors, compartments and access panels. It features a vertical clearance rotor for high vibration applications and is available in a variety of trip levers and mounting axles for ease of mounting/application and is FMVSS 206 (ECE R11) compliant.



050-0850 TriGuard Heavy Duty Latch Module With Slam Cam Option

This heavy duty latch module is designed for medium to heavy-duty entrance and rear door applications. It features a proven single rotor latch design and high strength 8 gauge (4.2mm) front mounting plate with flange mounting.



Self-aligning "slam cam" is available for the 050-0850 and 050-1600 latches



050-1600 TriGuard Heavy Duty Latch

This heavy-duty single rotor latch is designed for medium to heavy-duty vehicle entrance and rear door applications. It features a proven single rotor latch design, high strength 8-gauge (4.2mm) front mounting plate and robust straddle mount release lever. This slim design mounds into 2.00" (50.8mm) doors and retrofits competitive single rotor wedge style rotary latches.



050-1900 8mm Single Rotary Latch

TriMark's latest innovation in rotary latches features a robust modular design that offers extensive actuation locations and options providing application flexibility in a compact design. Designed for medium to heavy-duty applications for on or off-highway applications, this single rotor latch is available to meet FMVSS 206 (ECE R11).



140-0100 TriGuard Heavy Duty Cam Lock

This heavy duty cam lock module is designed to be located in high stress areas and used as a primary latching mechanism for securing personnel doors, rear doors, hatches and windows or as a secondary mechanism in conjunction with a primary door latch. Providing additional strength and security, it can be used singularly or in multiples and can be operated and controlled via rods or cables from a central release such as TriMark's 010-1000 Rotating Lever Handle.



Handles

010-1000 Rotating Lever Handle

These exterior and interior door handles are fabricated from high strength plate steel and feature modular attach/quick detach, 1000 hour Cass protection, and soft touch coating.



Push Pull COMMANDoor Interior Handle

The centerpiece of the COMMANDoor functionality is the COMMAND Handle. By designing a system in which a single control handle's motion coincides with the desired direction of door travel, TriMark has provided the first true Intuitive Motion Control System for the war fighter's ingress and egress from heavily armored vehicles.

